

Another Earthmaster First! New Front Mounted Side Rake



MAKE TOP GRADE HAY • PRESERVE THE COLOR • SAVE ALL THE LEAVES

For many years, hay, pea and bean growers have sought a rake adapted to tractor operation that would eliminate tractor damage to their crops. Now, for the first time, Earthmaster presents its front mounted side rake that wholly eliminates tractor damage and handles all crops quickly and cleanly without severe agitation characteristic of older types of equipment.

It is now possible to rake mowed hay days earlier than with other equipment, thereby avoiding sun-bleach. Windrows are so loose and fluffy that sweating and heating is entirely eliminated and color preserved. The hay cures without becoming brittle and windrows can be turned so gently that all the leaves are retained, making top grade quality.

IMPROVES BALER PERFORMANCE

The straight narrow windrows without heavy "roped" or "bunched" hay feed evenly into the baler. No tangled slugs to cause stalling. Feeders appreciate the way bales divide easily; no tight accordion-packed ropes to tear apart.

SEED GROWERS REALIZE INCREASED YIELD

The raking action of the conveyor handles thoroughly cured clover, alfalfa, and timothy with minimum loss of seed. All waste due to tractor wheels, rough windrow turning and failure to pick up swath under windrows is eliminated by the superior performance and design of this machine.

PEA AND BEAN GROWERS DELIGHT

The conveyor teeth handle peas and beans cleanly and gently, entirely eliminating tractor damage to pods and loss of crop due to rough handling and agitation. Chain conveyor cross-bars permit teeth to yield to solid obstructions, eliminating breakage.

FULL VISIBILITY

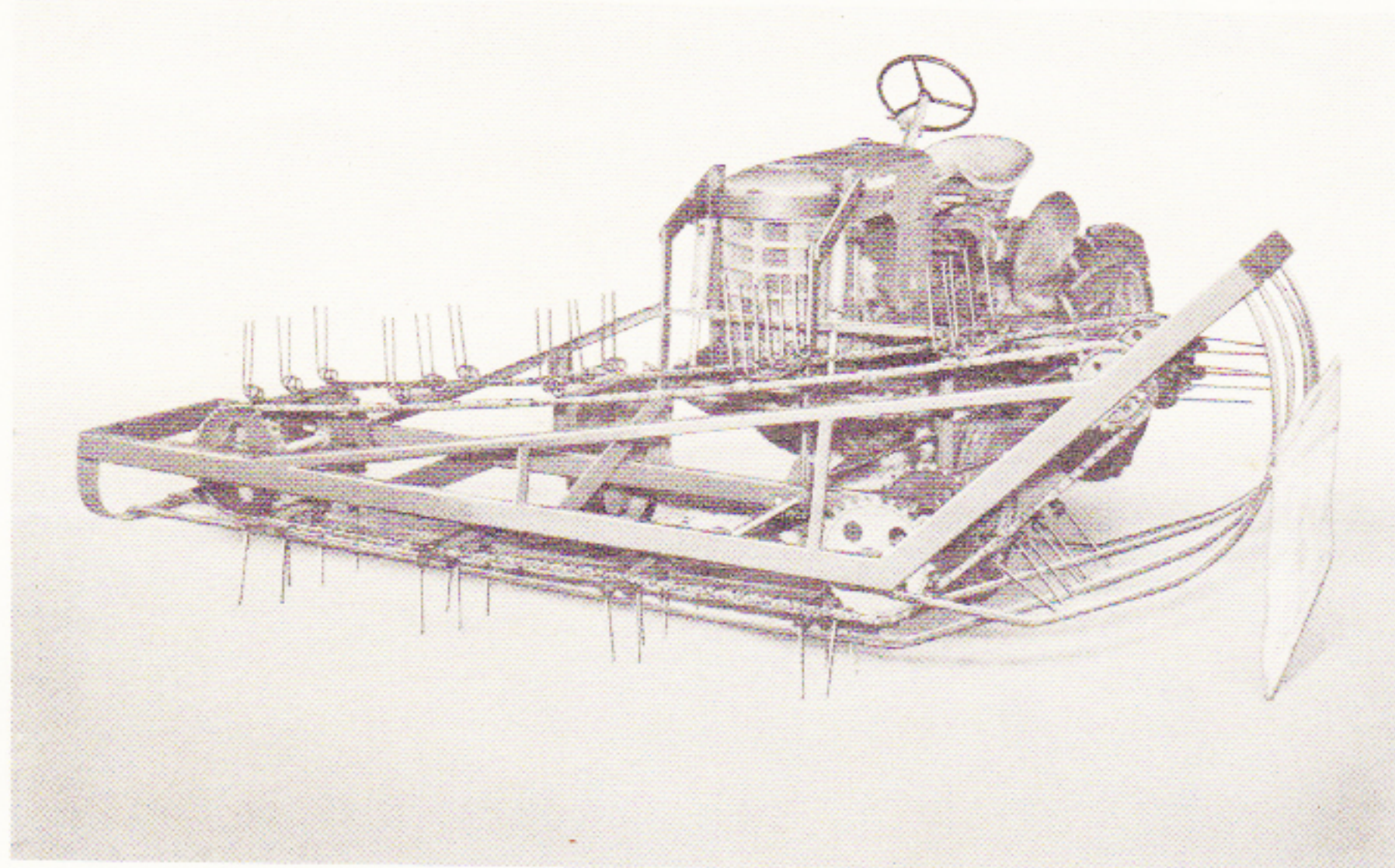
Day or night, without extra lights, the operator has full vision of work being performed. No tiresome turning of head to observe, as is necessary with rear tractor drawn equipment. This rake is by far the most easily maneuvered for cleaning up around irrigation stand pipes, high dykes at the end of fields or checks. Duomatic hydraulic control enables operator to raise or lower either end of the conveyor or entire assembly, without checking speed, to follow the contour of the ground. When young orchards are cropped to hay or to other products requiring raking, this equipment can be maneuvered around young trees without damage and pick up all of the mowed crops.

MAINTENANCE COSTS CUT 50%

For field or highway transport, Duomatic Hydraulic Control raises complete assembly high and clear. No extra tire equipment, wheel bearings or gears to pound out in rough fields or crossing irrigation checks. Repair costs easily reduced by one-half.



Earthmaster *Superior Design and Workmanship Assures* LONG LIFE • MINIMUM MAINTENANCE • DEPENDABILITY



All steel welded frame — great strength without excess weight.
Only 33 oil tempered, heat treated, spring steel, dual teeth.
Anti-friction ball and roller bearings — sealed in or pressure lubricated.
High grade steel chain — good for years of heavy service.
Can be mounted without removing mower if desired.
Tractor driven through power take-off drive—smooth, positive action.

EARTHMASTER FRONT MOUNTED POWER MOWERS 5', 6' AND 7' CUTTER BARS

Cutterbar mounted ahead of rear wheels for full view vision.

Quickly and easily removed from tractor — 4 cap screws and 6 bolts remove complete mower from tractor.

Power Take-Off-V-Belt Drive — prevents breakage.

Mower will operate efficiently at all speeds.

Anti-friction bearings for drive shaft — Timken closure, dirt tight roller bearings.

Pressure gun lubrication.

Heavy tubular frame construction.

Balanced Pitman drive wheel.

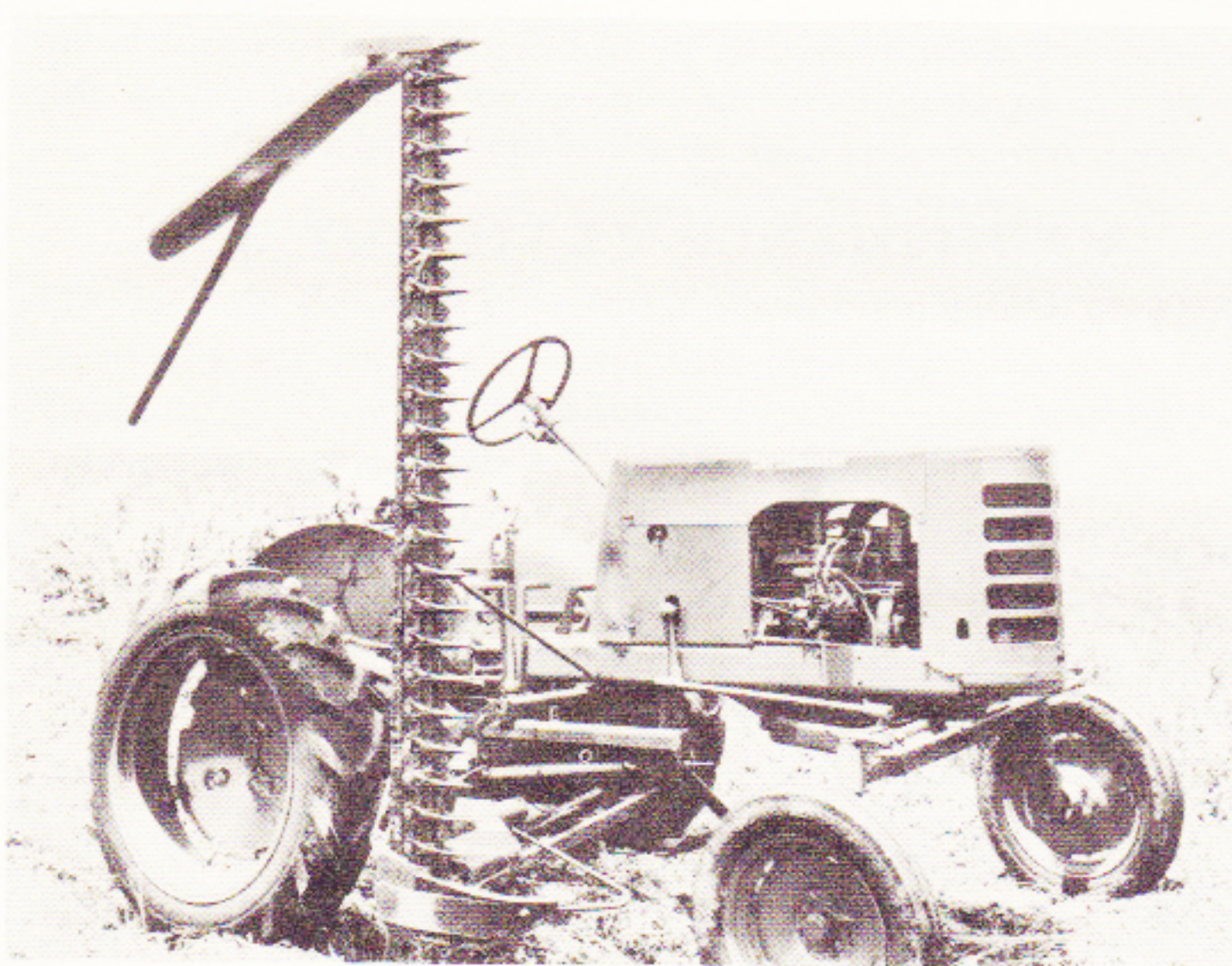
HYDRAULIC LIFT — Standard Equipment.

Guards to protect Pitman wheel and driven sheave from hidden obstruction.

Tractor drawbar remains on tractor so that field work, such as pulling rake or loader, can be done merely by raising cutterbar to transport position.

Tilt, lead and register adjustments provided in cutterbar.

EARTHMASTER FARM EQUIPMENT 10777 Van Owen Street, Burbank, California



Earthmaster Mowers — 5', 6' and 7' Cut, have quick acting Duomatic Hydraulic Lift



Clean, fast cutting in heavy alfalfa. Uses 2 to 3 quarts of fuel per hour