

SETTING UP & OPERATING INSTRUCTIONS

EARTHMASTER MOUNTED CORN & COTTON CULTIVATORS - MODELS #111 & #113 FOR EARTHMASTER MODEL "C" OR "CH" TRACTORS

Model #111	One Row	4 Shovel	"CH" Tractor
#C111	One Row	4 Shovel	"C" Tractor
#113	One Row	6 Shovel	"CH" Tractor
#C113	One Row	6 Shovel	"C" Tractor

Before assembling Cultivator, check the following list to see if all bundles are accounted for:

- | | |
|-------------------------------|--|
| 1 - Front Tool Bar | 2 - Spring Trips bundles of 3 |
| 1 - R.H. Gang Assembly | 1 - Spring Trip bundle of 2 (113 & C113) |
| 1 - L.H. Gang Assembly | 1 - Spear Points bundle of 4 or 6 |
| 1 - Gang Lift & Depth Control | 1 - Sweep bundle of 2 |
| 1 - Mulching Attachment | 1 - Set Shields |

Other Cultivator equipment such as half sweeps, disc hillers, special spear points, larger full sweeps, etc., are available as extra equipment. See your Dealer.

Study all plates carefully to insure correct assembling of cultivator to tractor.

Set wheels of tractor to run approximately in the center of rows to be cultivated. Rear wheels of tractor may be set in the following tread width positions - 36, 40, 44, 48, 52, 56, 60 & 64 inch. Front axle to be set at narrowest position. For 36 to 42 inch rows, front wheels are in normal position. For 42 to 48 inch rows, front wheels are to be turned outward. Do not change front axle setting.

Remove all parts wired to each bundle. Small parts and loose standard hardware items such as bolts, nuts, pins, etc., are in bags wired to their respective bundles.

Tractor must be equipped with Hydraulic Lift, including Master Lift Shaft. If tractor is equipped with a Power Take-off with pulley, remove pulley before mounting cultivator.

SETTING UP INSTRUCTIONS

1. Attach tool bars "1", Plate 1 to tractor frame.
2. Install tie bar "2", Plate 1, between tool bars underneath tractor frame.
3. Slide one gang assembly "3", Plate 1, on each tool bar. Left-hand gang shown. Set center of gang 5 inches from tractor frame. This distance may be increased dependent upon crop being cultivated.
4. Hook eye of tie rod "4", Plate 1, in angle inside of radiator shell. Insert clip "5", Plate 4, in the open end of the tool bar. Pass the threaded end of the tie rod through the clip and draw the tie rod tight. Note that there is a nut on each side of the clip.
5. Attach gang lift support assembly "6", Plate 1, to tractor frame.
6. Bolt depth control levers "7", Plate 1, in place. Note that lever grips point outward.

SETTING UP & OPERATING INSTRUCTIONS

EARTHMASTER MOUNTED CORN & COTTON CULTIVATORS - MODELS #111 & #113

SETTING UP INSTRUCTIONS (Cont'd)

7. Slide pressure rod arm "8", Plate 1, on to square lift shaft. Position arm to match gang setting.
8. Install pressure rod assembly "9", Plate 1, as shown.
9. Bolt adjusting link "10", Plate 4, of actuating assembly to depth lever.
10. Connect Master Lift Arms "1", Plate 2, to actuating arms "11", Plate 1, with lift rods "12", Plate 1. Note position of lift rod ends.
If right-hand lift rod interferes with hydraulic lines to valve, it will be necessary to bend lines, with care, to permit clearance.
11. To Mount Mulching Attachment. See Plate 2.

Attach mulching bar assemblies "2" to drop plate of tractor. Long bolt is inserted through upper forward hole of lower cluster of 4 holes in drop plate. Stud matches lower rear hole of same cluster.

Attach pressure rod "3" to mulching bar "2" and lift arm "1" as shown.

ADJUSTMENTS & OPERATING INSTRUCTIONS

Front gangs are leveled by means of the adjusting pivot block "A", Plate 1.

Depth levers "7", Plate 1, move forward for depth control.

Gang bolts "13", Plate 1, should be adjusted so that gang works freely vertically but has a minimum of sidewise motion.

Adjust pressure rod springs up against pressure rod lift arms to hold cultivator in the ground at the desired depth.

Install spring trips to front gangs and mulching attachment as shown. Position of spring trip to be determined by crop, field condition, and operation desired. Attach desired tools.

All working parts should be thoroughly and frequently lubricated with light motor oil.

Before operating machine, check for correct assembly and make certain that all bolts, nuts, pins, and other parts are secure.

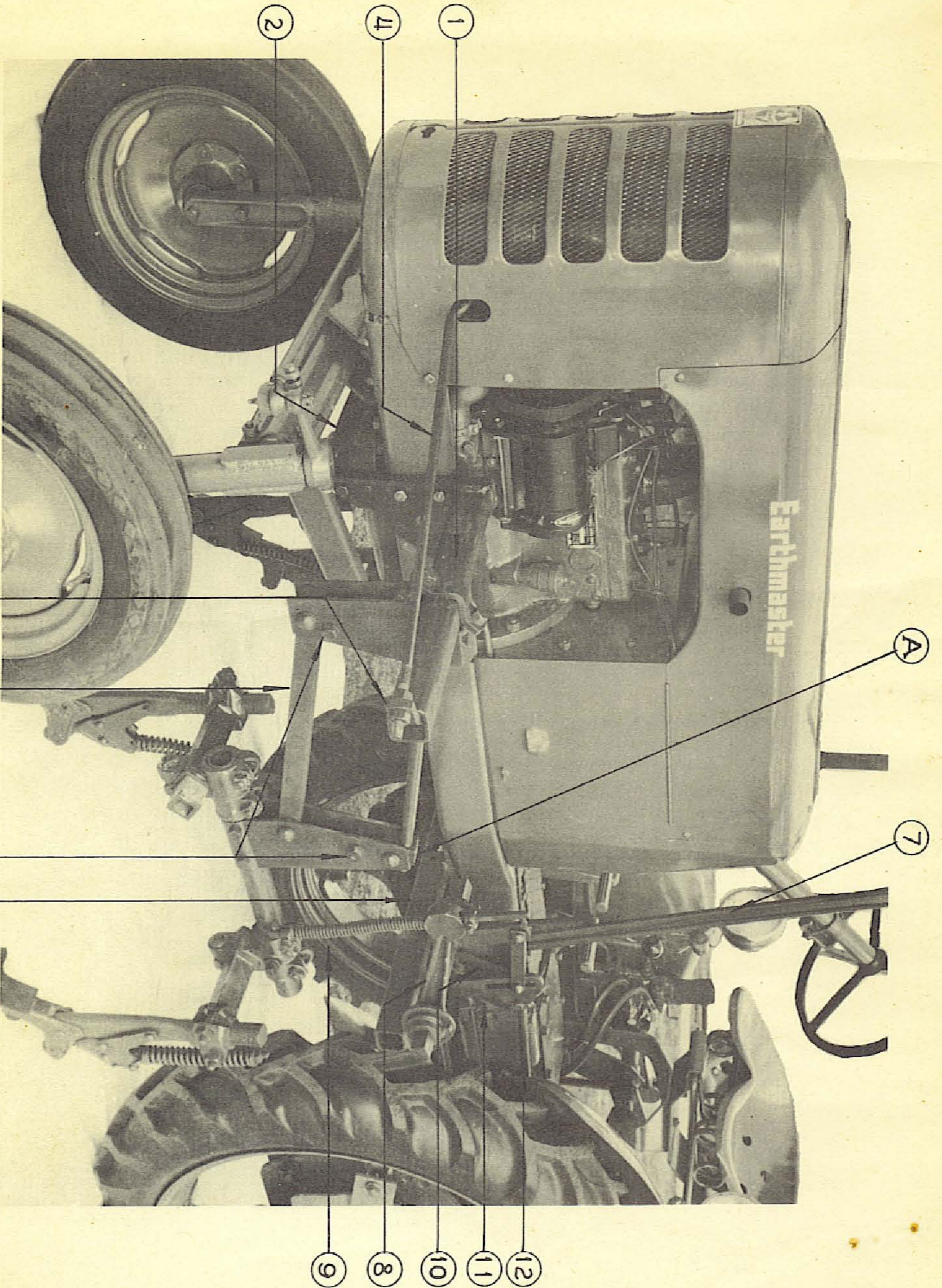


PLATE 1

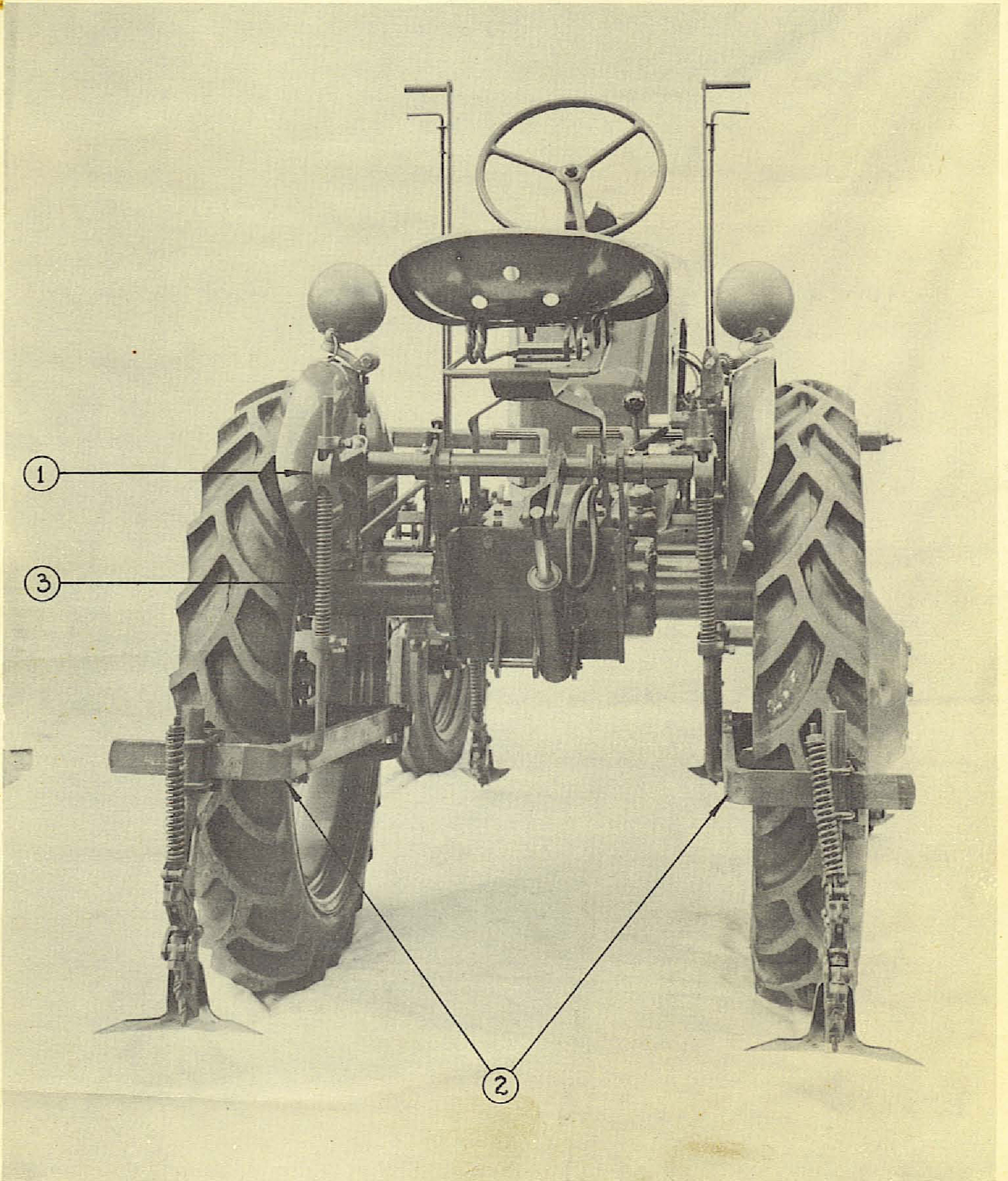
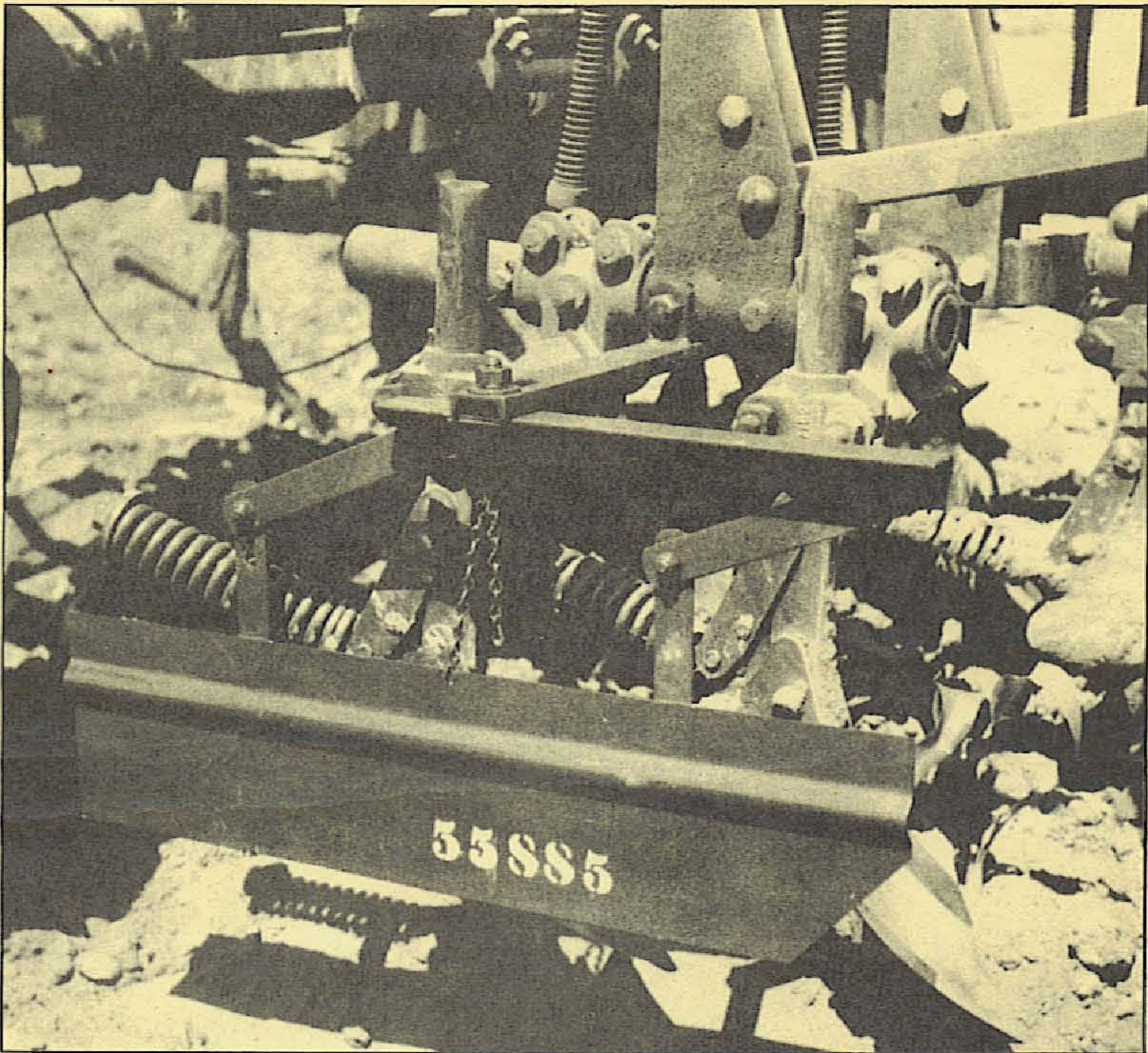


PLATE 2



CORN & COTTON CULTIVATOR SHIELD

Mounted by removing one bolt from gang brackets
replacing with longer bolt furnished with shield.